

AXIS 240Q Video Server

Digital benefits for analog surveillance systems

The AXIS 240Q Video Server transforms traditional analog video into high quality digital images. It connects directly to an Ethernet network, and is a cost-efficient alternative that provides high quality video from analog video sources at 6/5 frames per second per channel.

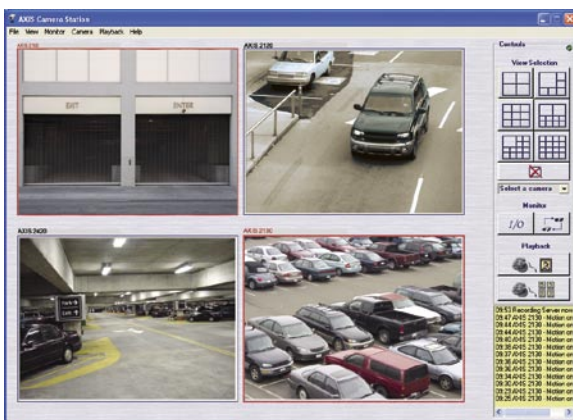
The high-performance AXIS 240Q is designed for professional IP-Surveillance systems, providing video from all cameras simultaneously. It is ideal as an integrated part of a large security system. Network utilization is optimized with functions such as built-in video motion detection and multiple compression levels. Powerful event management based on triggered or scheduled events adds value for the demanding customer.

The AXIS 240Q comes with a strong security package, including HTTPS, IP address filtering and multiple user access levels with password protection. Based on the feature set of the world's most sold video server, the AXIS 240Q also has PTZ functionality, a powerful application programming interface, and is compatible with all major software applications.

Axis video servers represent a cost-effective single box solution for transmitting digital video over intranet networks, or the Internet.



- High quality video at 6/5 frames per second per channel
- 10 different resolutions up to 768x576, and 11 different compression levels
- Built-in Video Motion Detection
- Support for PTZ units
- Compatible with all major software applications
- HTTPS encryption for network security



AXIS 240Q Video Server

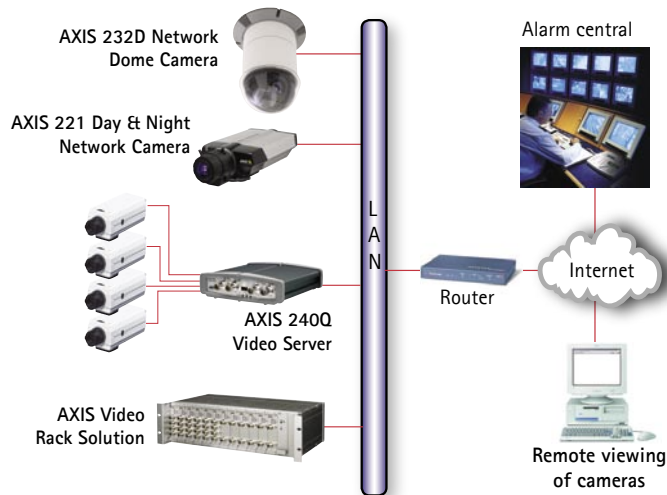


Specifications

Models	Axis 240Q: Four port Video Server Also available as for Video Rack Solution	Video access from Web browser	Camera live view, sequence tour capability for up to 20 PTZ presets or other Axis video sources, customizable HTML pages
Video compression	Motion JPEG	Minimum Web browsing requirements	Pentium III CPU 500 MHz or higher, or equivalent AMD 128 MB RAM AGP graphic card, Direct Draw, 32 MB RAM Windows XP, 2000, NT4.0, ME or 98, DirectX 9.0 or later Internet Explorer 5.x or later For other operating systems and browsers see www.axis.com/techsup
Resolutions	4CIF, 2CIFexp, 2CIF, CIF, QCIF max 704x480 (NTSC) 768x576 (PAL) min 160x120 (NTSC) 176x144 (PAL)	System integration support	Powerful API for software integration available at www.axis.com , including HTTP API, AXIS Media Control SDK, event trigger data in video stream, embedded scripting and access to serial port peripherals over HTTP/TCP. Watchdog ensures continuous operation, can be monitored by other systems via event notification. Embedded operating system: Linux 2.4
Frame rate	Up to 6/5 (NTSC/PAL) frames per second per channel	Supported protocols	HTTP, HTTPS, SSL/TLS*, TCP, SNMPv1/v2cv/v3 (MIB-II), UDP, IGMP, SMTP, FTP, DHCP, UPnP, ARP, DNS, DynDNS, SOCKS. More information on protocol usage available at www.axis.com <i>*This product includes software developed by the Open SSL Project for use in the Open SSL Toolkit.</i>
Video streaming	Motion JPEG Controllable frame rate and bandwidth	Applications (not included)	AXIS Camera Station – Surveillance application for viewing, recording and archiving up to 25 cameras AXIS Camera Management – Video installation and management tool. Download for free at www.axis.com AXIS Camera Explorer – Basic software for viewing and manual recording See www.axis.com/partner/adp_partners.htm for more software applications via partners
Image settings	Compression levels: 11 Rotation: 90°, 180°, 270° Aspect ratio correction Color: Color, black & white Overlay capabilities: Time, date, text or image	Included accessories	Power supply 9V DC, mounting brackets, connector kit, Installation Guide, CD with installation tool, software and User's Manual
Security	Multiple user access levels with password protection, IP address filtering and HTTPS encryption	Accessories (not included)	AXIS 292 Network Video Decoder Power over Ethernet splitters and midspans IEEE 802.11g Wireless bridge and Access point
Alarm and event management	Events triggered by built-in motion detection, external inputs or according to a schedule Image upload over FTP, email and HTTP Notification over TCP, email, HTTP and external outputs Pre- and post alarm buffer of 3 MB per channel	Approvals	EMC: CE compliant according to: EN55022/1998 Class B, EN55024/1998, EN61000-3-2: 2000, EN61000-3-3:2000 FCC Subpart B Class A, B, VCCI Class B, C-tick AS/NZS 3548 Safety: EN60950, UL, CSA (power supply only)
Pan/Tilt/Zoom	A wide range of PTZ and dome cameras is supported, free drivers available at www.axis.com 20 presets/camera, Guard tour, PTZ control queue	Dimensions (HxWxD) and weight	42 x 140 x 155 mm (1.7" x 5.5" x 6.1") 540 g (1.2 pounds) excluding power supply
Connectors	4 BNC inputs for analog composite video Ethernet 10BaseT/100BaseTX, RJ-45 Terminal block: 4 alarm inputs, 4 alarm outputs, RS485/422 half duplex port, alternative power connection D-Sub for RS-232 port		
Casing	Metal casing. Standalone, stackable or with brackets for wall or cage mount		
Processors and memory	CPU: ETRAX 100LX 32bit Video processing and compression: ARTPEC-2 Memory: 32 MB RAM, 8 MB Flash		
Power	7 – 20 V DC, max 8 W		
Operating conditions	5 – 50 °C (41 – 122 °F) Humidity 20 – 80% RH (non condensing)		
Installation, management and maintenance	Installation tool on a CD and Web-based configuration Support for configuration backup and restore Support for firmware upgrades over HTTP or FTP, firmware available at www.axis.com		



AXIS 240Q Video Server is also available as blade version for AXIS Rack Solution. 12 blade slots allow for centralized video server management.



www.axis.com

AXIS
COMMUNICATIONS
Make your network smarter